

EDEN MIDCALF
— SALES & LETTINGS —

£490,000
Church View Gardens
Stourbridge, DY7 6EF

PROPERTY SUMMARY

A distinctive modern four bedroom detached family house enjoying a pleasant setting at the head of this popular cul-de-sac in historic Kinver village. Located within five minutes walking distance of National Trust owned Kinver Edge and surrounding woodlands and within easy reach of village amenities. Offering an impressively spacious and beautifully presented layout, which is "ready to move into", including two reception rooms and four excellent sized bedrooms, the master of which has an en-suite shower room. The property also includes a large pebbled driveway with off-road parking for four cars, a double garage, pleasant landscaped front gardens with seating area, and a wonderful landscaped rear garden, which enjoys an open rear aspect.

4



2



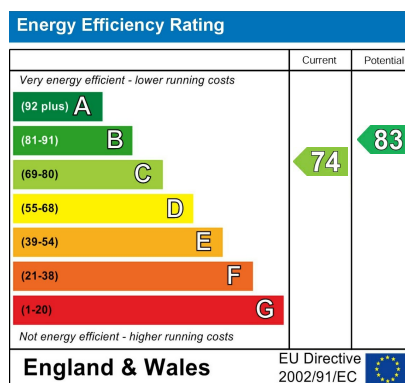
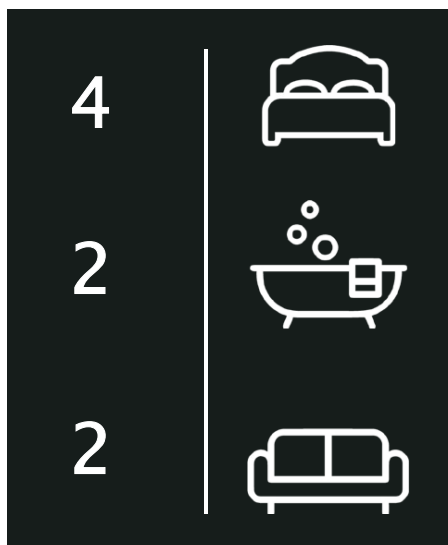
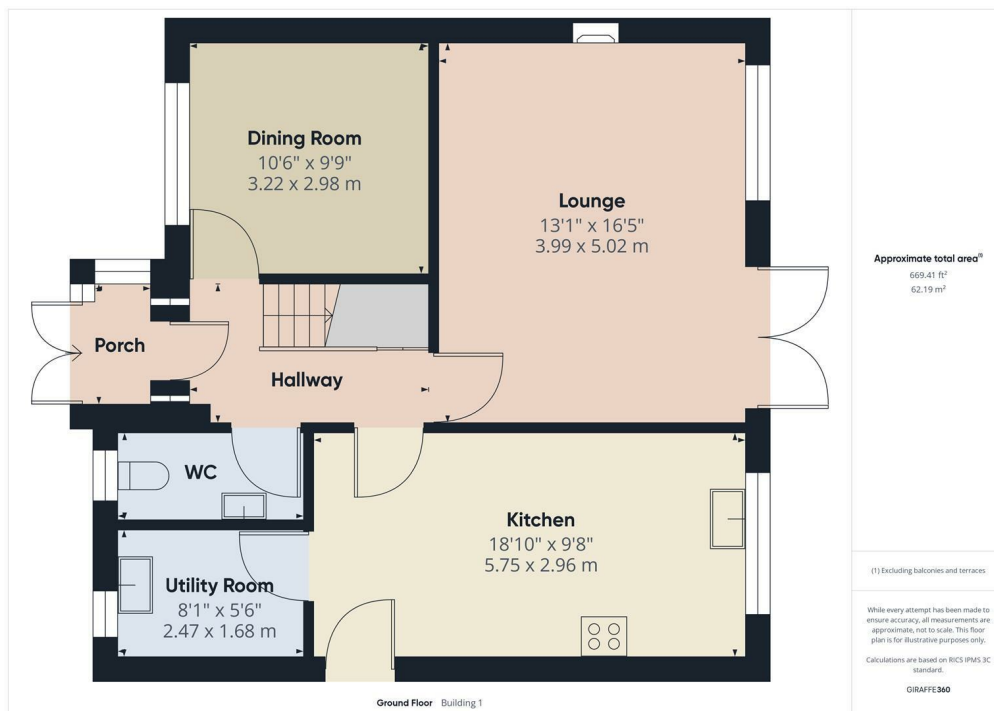
2











Agents Note: Whilst every care has been taken to prepare these particulars, they are for guidance purposes only. All measurements are approximate and are for general guidance purposes only and whilst every care has been taken to ensure their accuracy, they should not be relied upon and potential buyers/tenants are advised to recheck the measurements

EDEN MIDCALF
SALES & LETTINGS

28 High Street
Kinver
DY7 6HF

01384 878000

<https://www.edenmidcalf.co.uk/cor-us/>